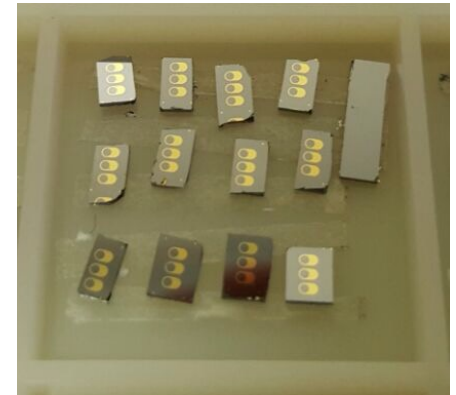
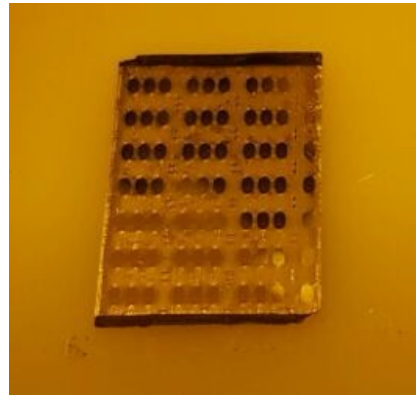


# John Nance

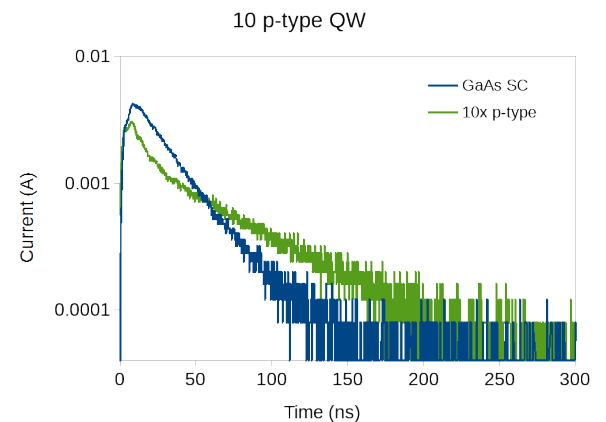
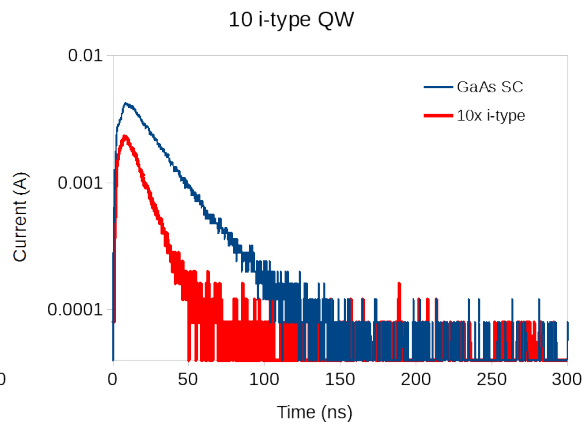
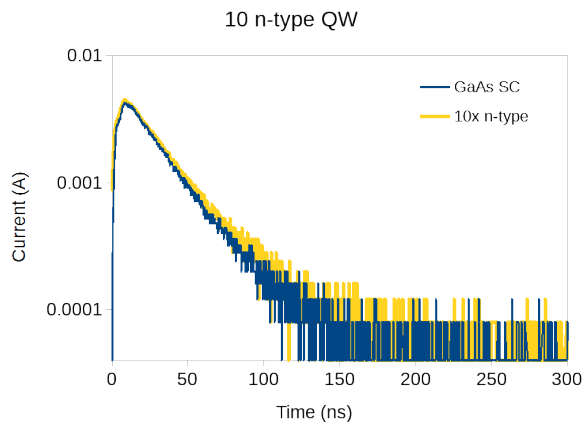
B.S. Physics - Graduated  
University of North Carolina – Chapel Hill

Project: Investigation into the Effects of Quantum Structures on the Carrier Dynamics of GaAs/GaNAs Solar Cells

- Fabrication and Characterization



- Time-resolved Photocurrent



# Food in Japan



Conveyor Belt Sushi

# Food in Japan



Barbeque



Oyakodon

Cold Udon



Bento Box



Ramen

Tebasaki

# Food in Japan

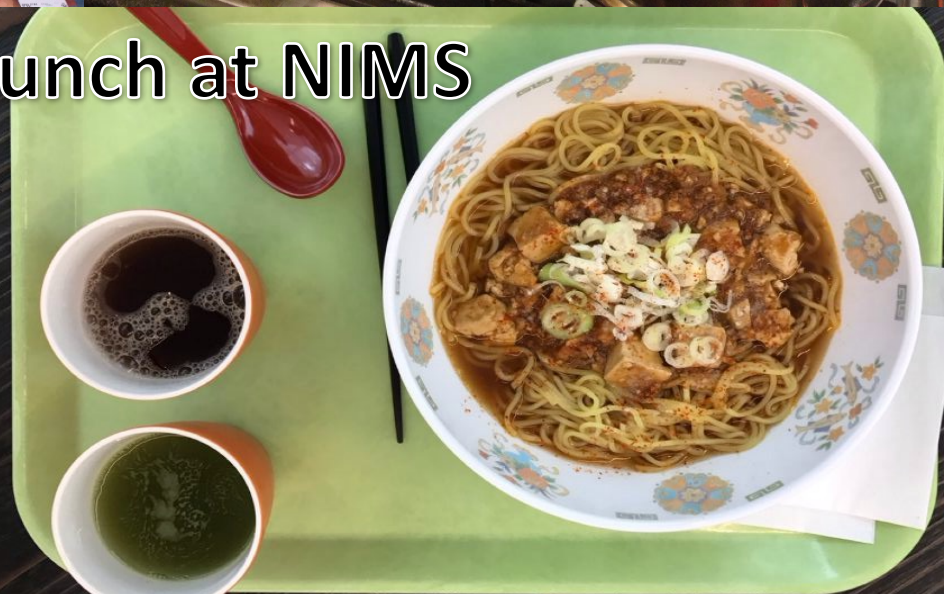


Kasumi



Indian Cooking Class

## Lunch at NIMS



# Observation

Communication was especially important.

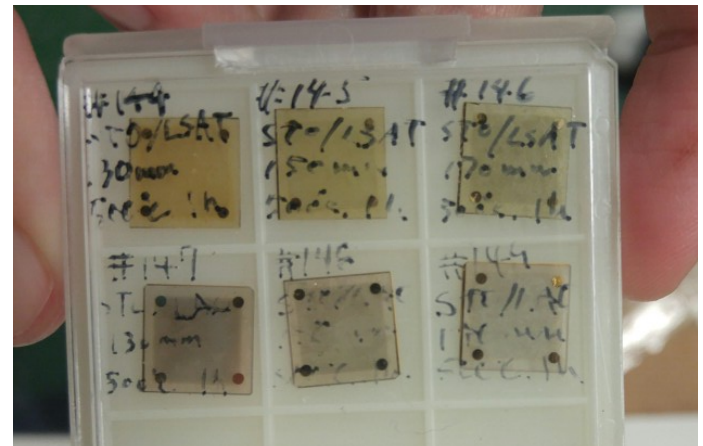
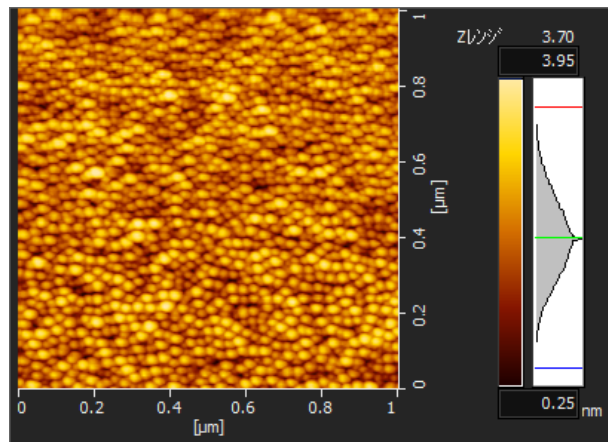
- Language Barrier
- Polite

# Skye Tackkett

Physics—Senior

Missouri University of Science and Technology

- Growth parameter control of structures and properties of  $\text{SrTiO}_3$  (STO) thin films
- Sputtered films and characterized roughness, crystallinity, composition and electrical properties



# Japan: Life at NIMS

- NIMS – National Institute for Materials Science
- Three sites: Sengen, Namiki, Sakura
- Many buildings at each site, a lot of going around between them
- ID cards
- Lab groups – eating together, tea parties, etc.

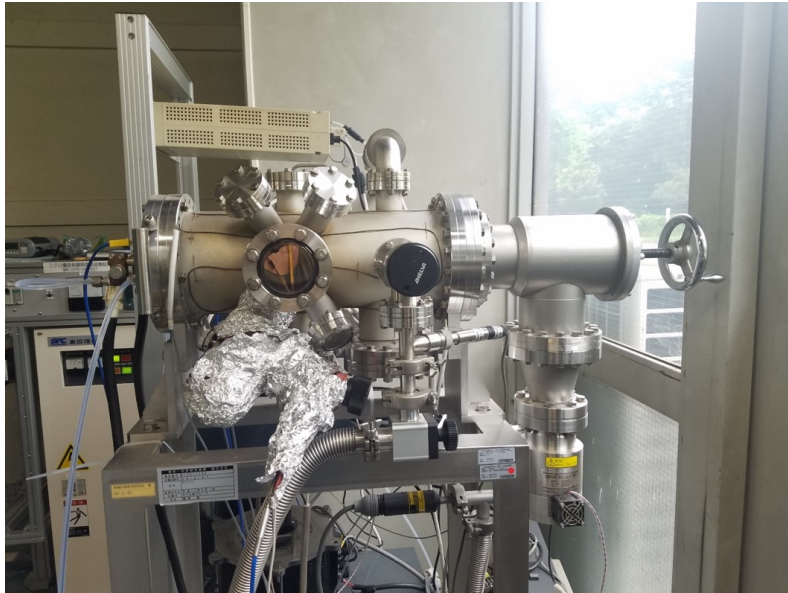


# An Observation

- In speaking with a student from the Toyota Technical Institute
  - He complained about not having anyone to talk about his research with, as in other people researching the same topic as he was
  - I'm used to talking about my research with anything that moves, even if that means I have to explain a lot of things along the way
  - In addition, the main group I was a part of was very large, but the only time we would interact with each other was often only at office tea parties

# Maya Martirosyan

Physics Graduate  
Harvey Mudd College



Research with Prof. Takao Mori working on growing thin film YbBx for thermoelectric applications

## Tokyo



# Cooper Thome

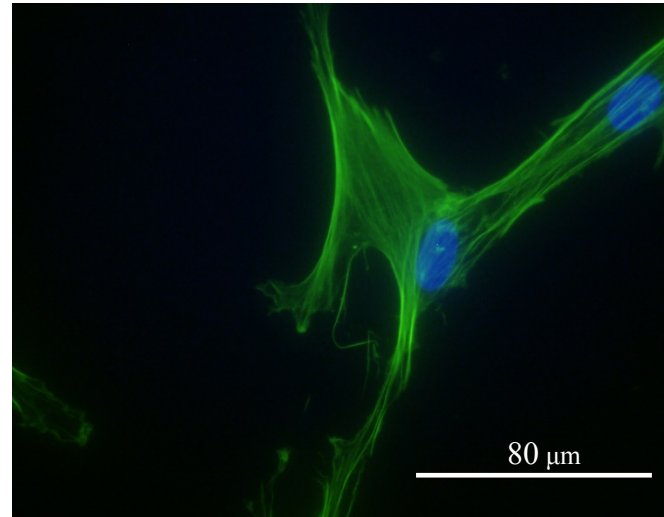
Chemical Engineering – Senior  
University of Tennessee at Chattanooga

**Project:** Manipulation of cell spreading and cytoskeleton of stem cells by micropatterned surfaces

Mesenchymal stem cells  
(MSCs)

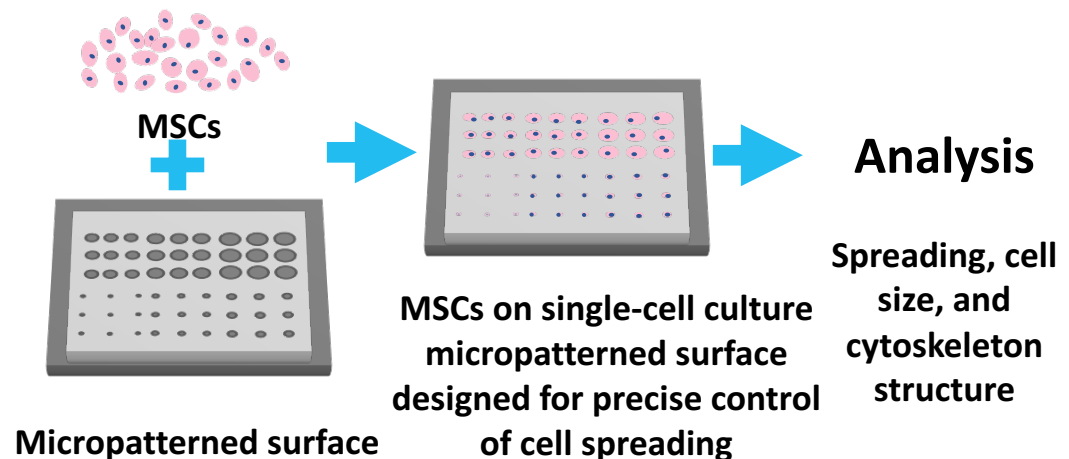
Undifferentiated cells with ability for long-term self-renewal and differentiation into various cell types (stemness)

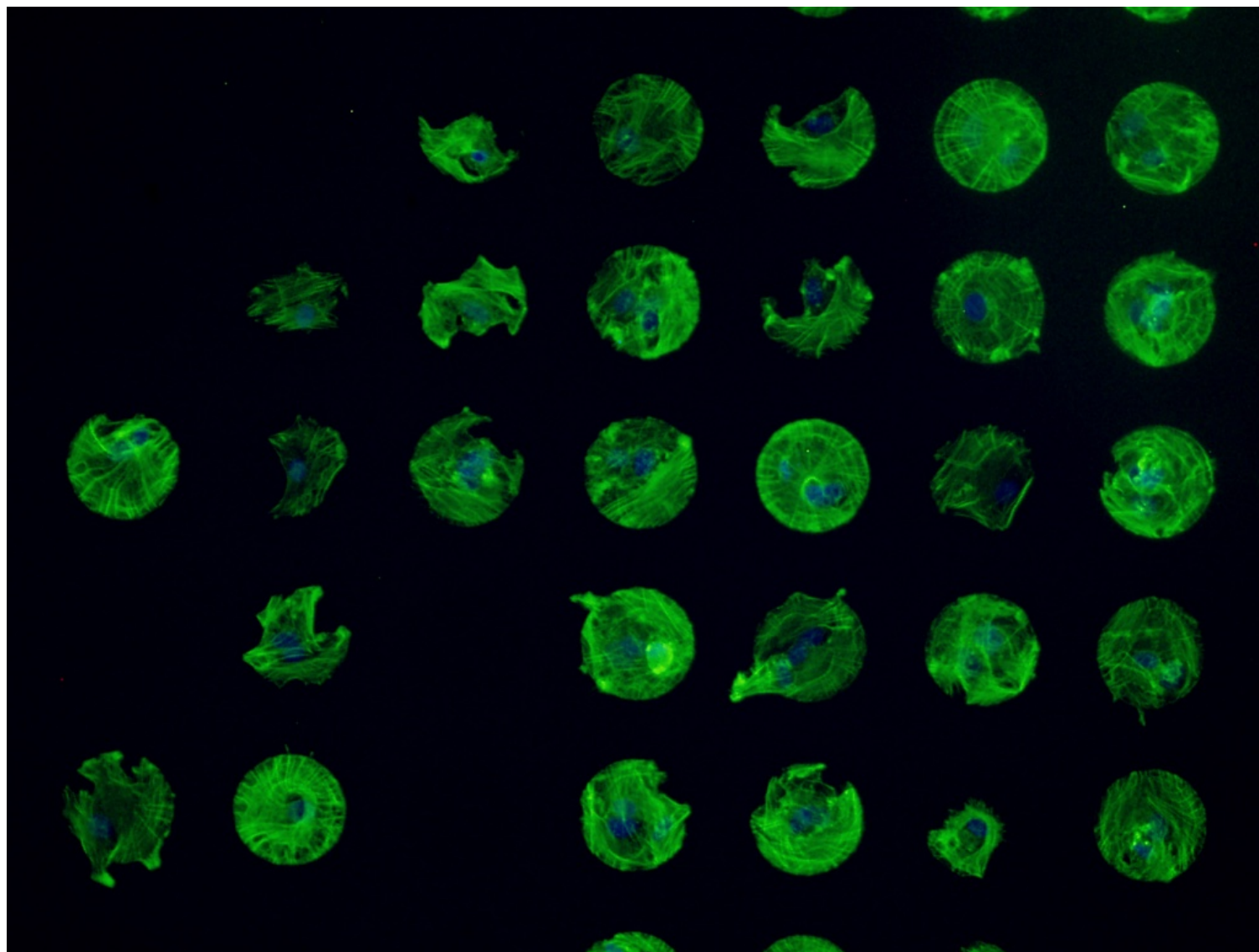
Behavior, such as differentiation, can be affected by microenvironment



MSC cultured on standard polystyrene substrate

Actin in green  
Nucleus in blue





# Outdoors in Japan



Kegon Falls, Lake Chuzenji, and Mt. Nantai in Nikko, Tochigi Prefecture.



Mountain biking at Fujimi Panorama Ski Resort,  
Nagano Prefecture



Sunrise on Mount Tsukuba, Ibaraki Prefecture



Angry monkey in Nikko, Tochigi Prefecture



Lake Biwa, Shiga Prefecture

# Observations about working and living in Japan

- Everyone is very kind and helpful
- Long hours are no joke
- Working in science is quite similar to in the U.S., aside from some small cultural differences

