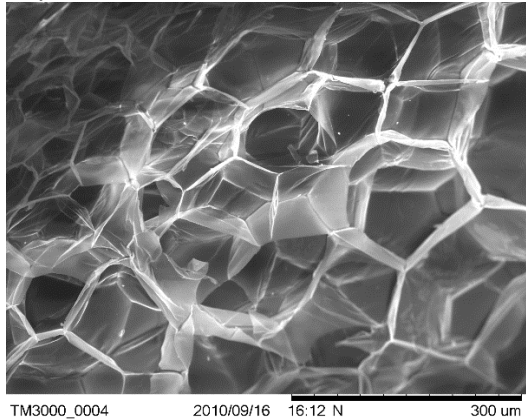


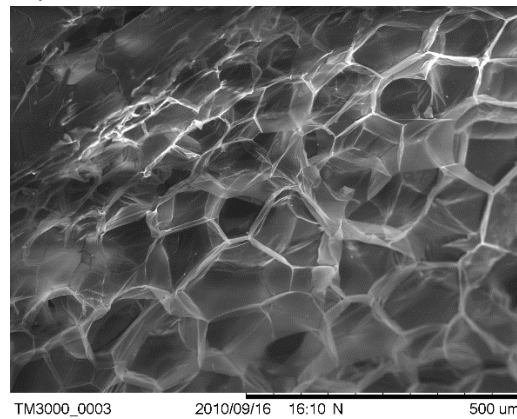


Images of materials (evidence) that could be found at the scene of the “crime.” The majority of these are from the SEM.

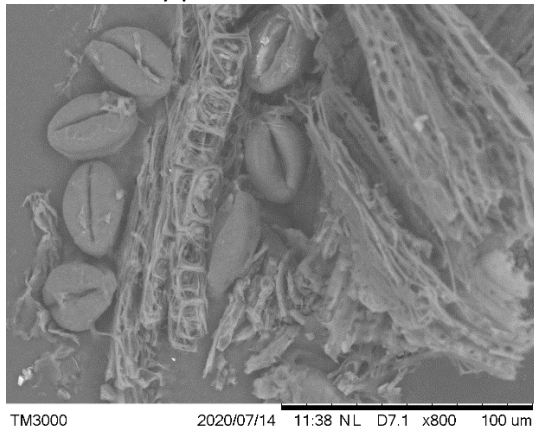
Styrofoam 250X



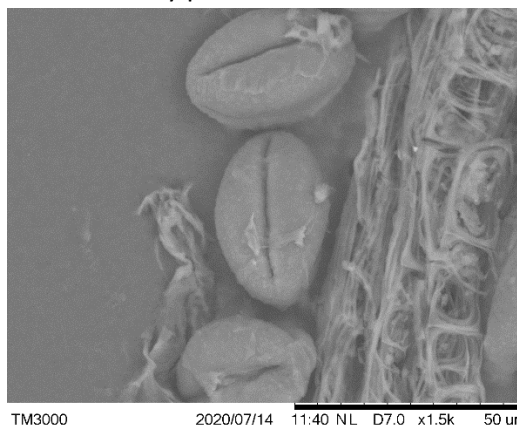
Styrofoam 180X



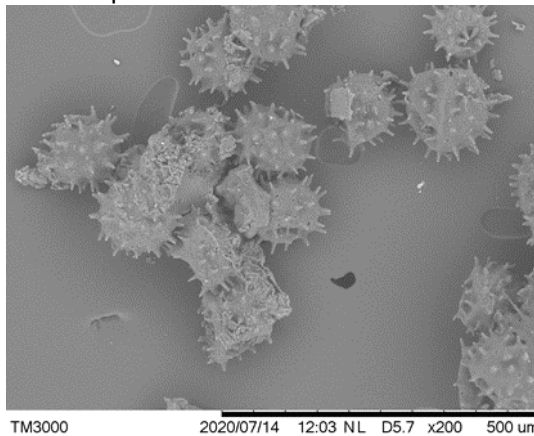
Gerbera Daisy pollen 800X



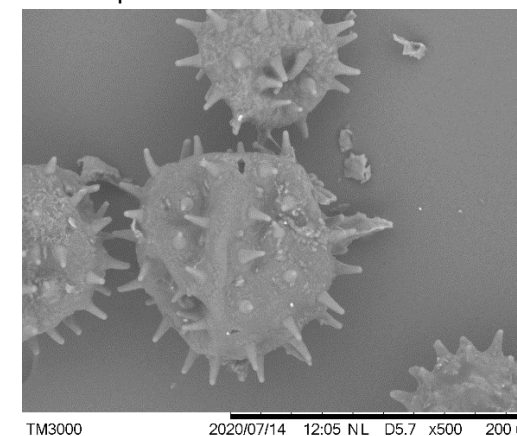
Gerbera Daisy pollen 1500X



Hibiscus pollen 200X



Hibiscus pollen 500X

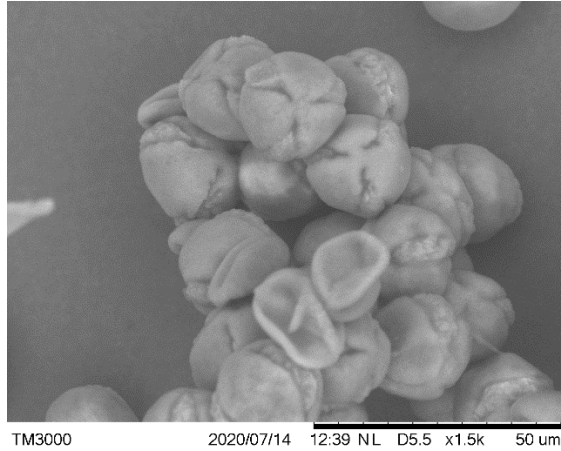




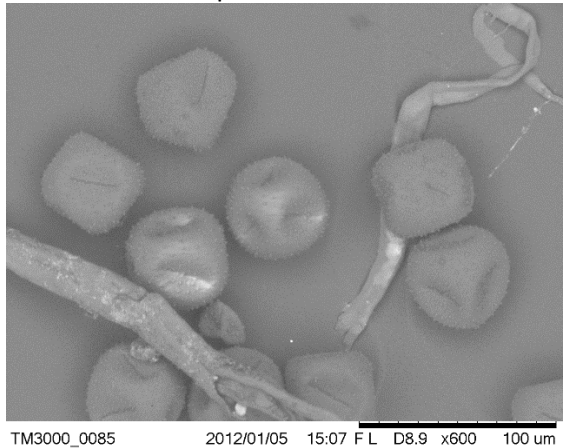
Geranium pollen 1000X



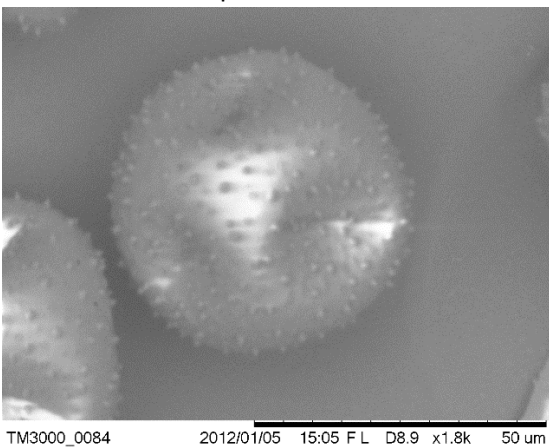
Geranium pollen 1500X



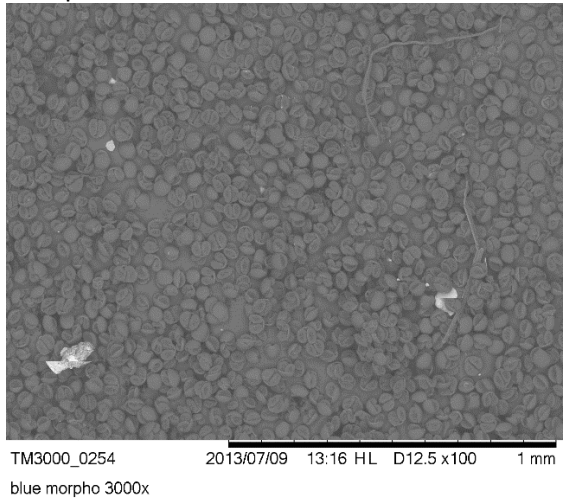
Christmas Cactus pollen 600X



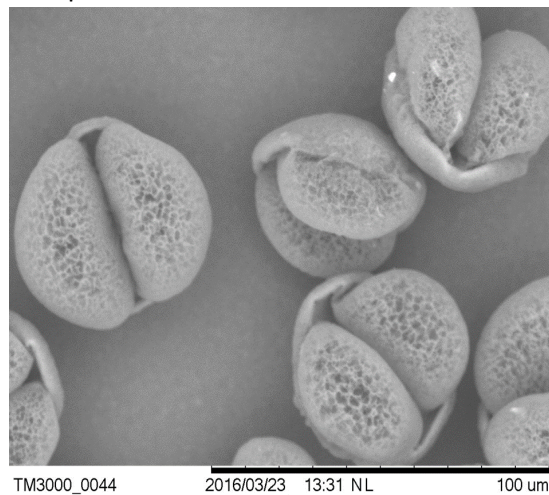
Christmas Cactus pollen 1800X



Pine pollen 100X



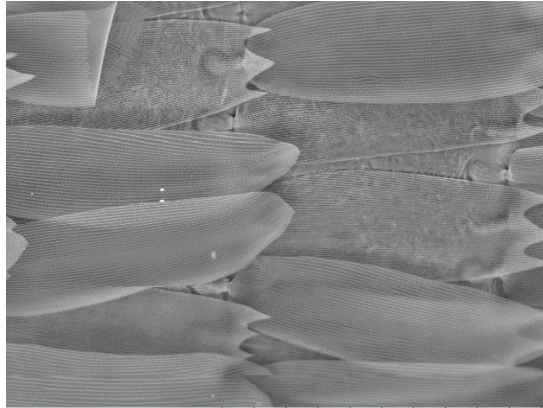
Pine pollen 800X





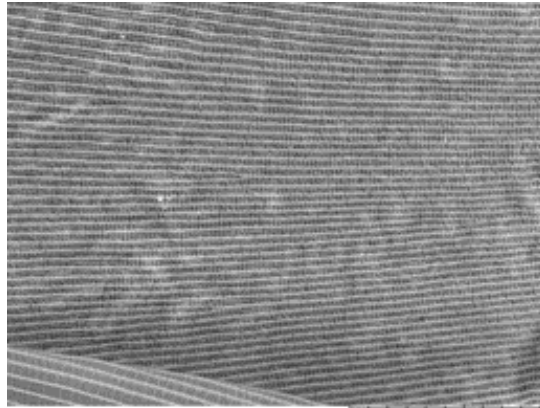


Butterfly wing 500X



TM3000\_0231 2013/06/25 10:10 HL D4.1 x500 200 um  
blue morpho 3000x

Butterfly wing 2000X



TM3000\_0234 2013/06/25 10:16 HL D4.1 x2.0k 30 um  
blue morpho 3000x

Head Lice (from TN.gov)



Flea (from pngimg.com)



Head Lice 1200x (Wikipedia.com)

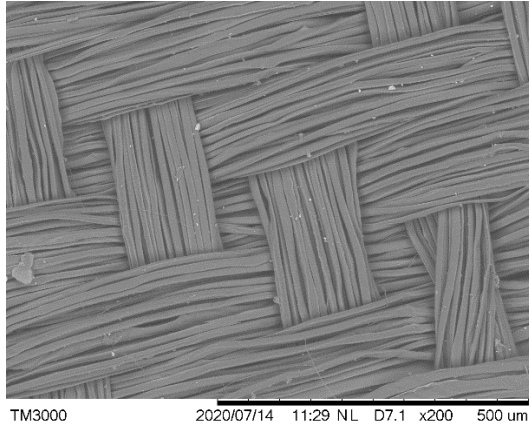


Cat Flea (From Flickr.com)

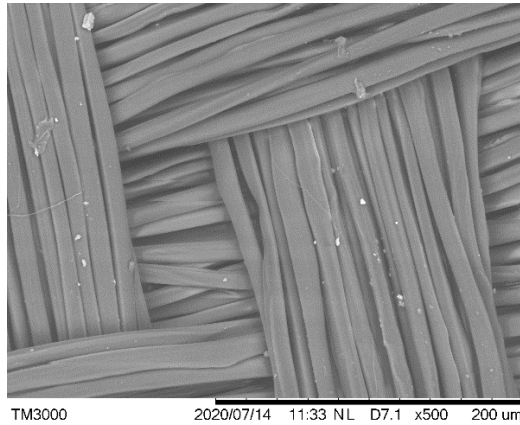




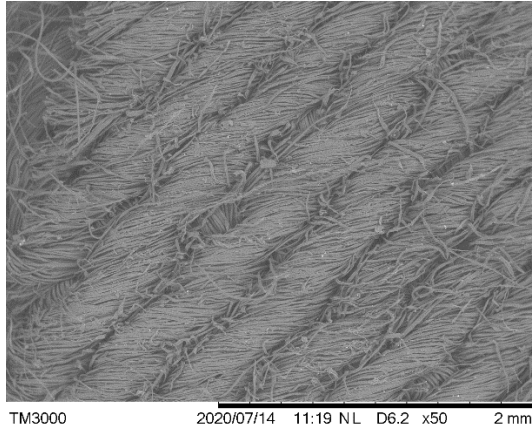
Silk fabric 200X



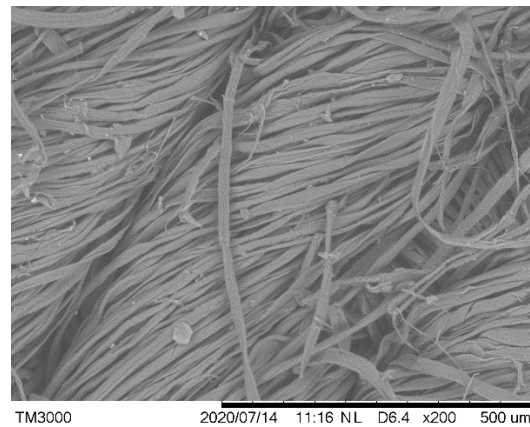
Silk fabric 500X



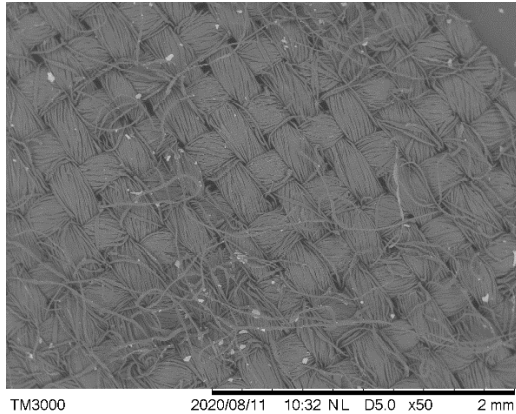
Denim 50X



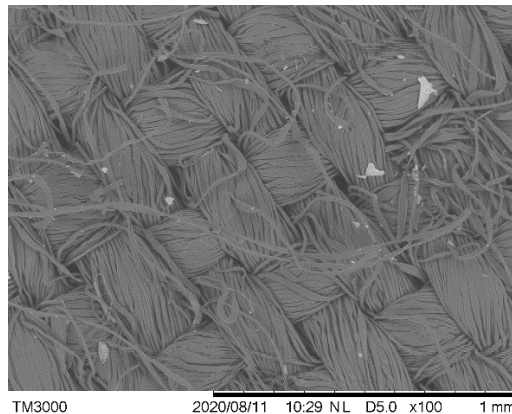
Denim 200X



Cotton 50X



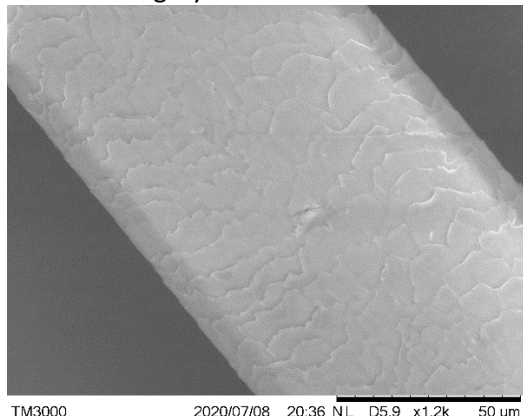
Cotton 100X





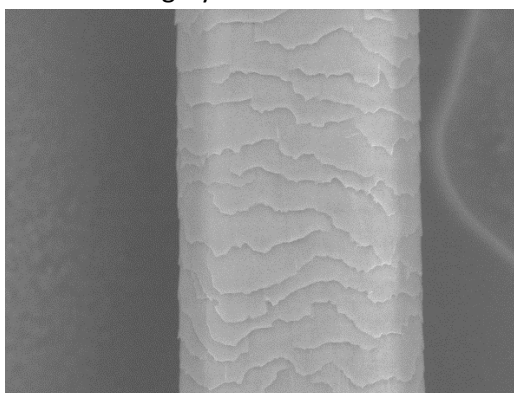


Human hair gray 1200X



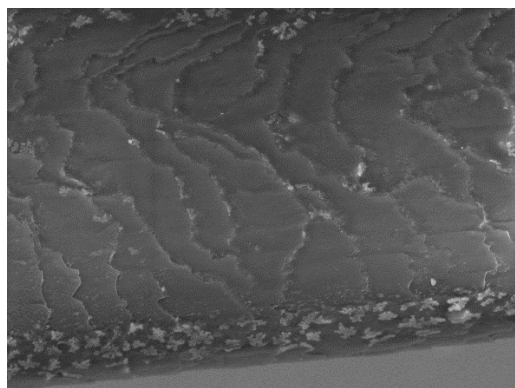
TM3000 2020/07/08 20:36 NL D5.9 x1.2k 50 um

Human hair gray 1200X



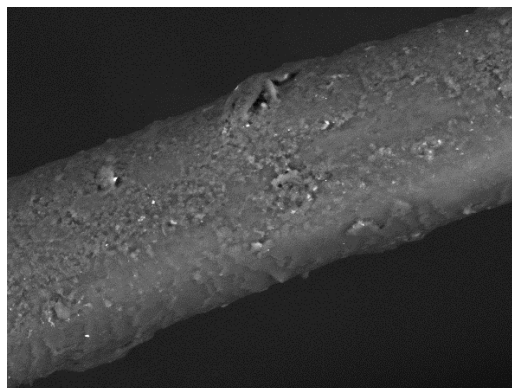
TM3000 2020/07/08 20:19 NL D6.0 x1.2k 50 um

Human blond hair 1800X



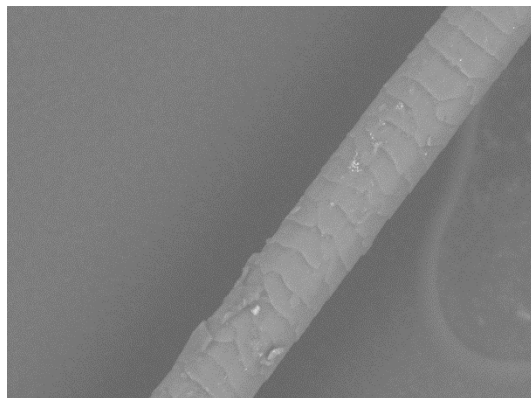
TM3000 2015/11/20 13:51 NL D6.2 x1.8k 50 um

Human died red hair 1200X



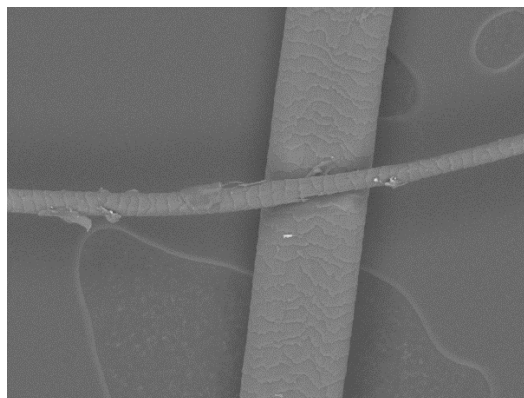
TM3000 2015/11/20 14:11 NL D4.4 x1.2k 50 um

Cat hair 1000X



TM3000 2020/07/09 10:17 NL D6.6 x1.2k 50 um

Cat & human hair 500X

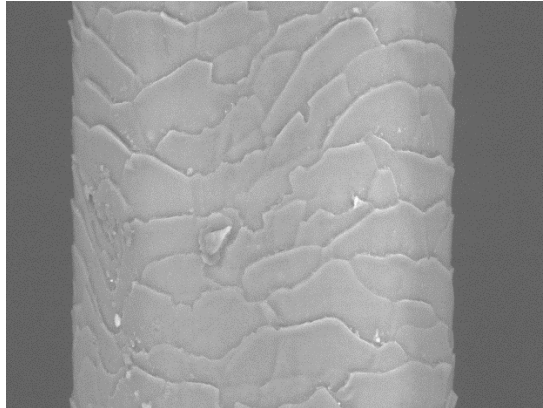


TM3000 2020/07/09 10:14 NL D6.6 x500 200 um



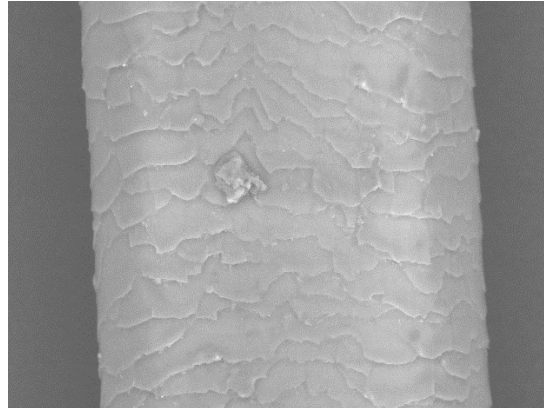


Black dog hair 1200X



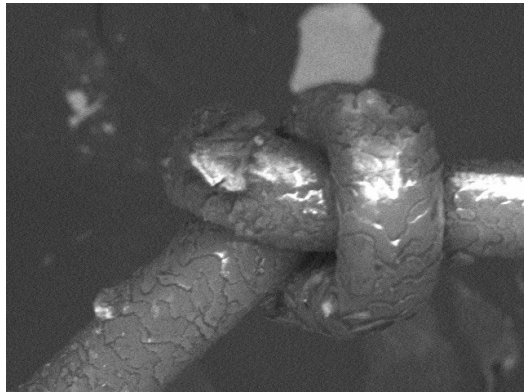
TM3000 2020/07/08 20:31 NL D5.8 x1.2k 50 um

White dog hair 1200X



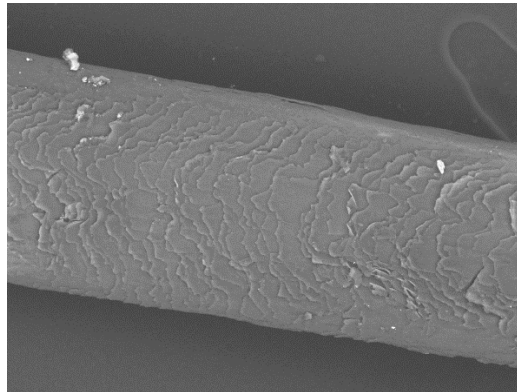
TM3000 2020/07/08 20:32 NL D5.9 x1.2k 50 um

Brown hair 600X



TM3000\_0018 2012/11/14 13:57 F 100 um

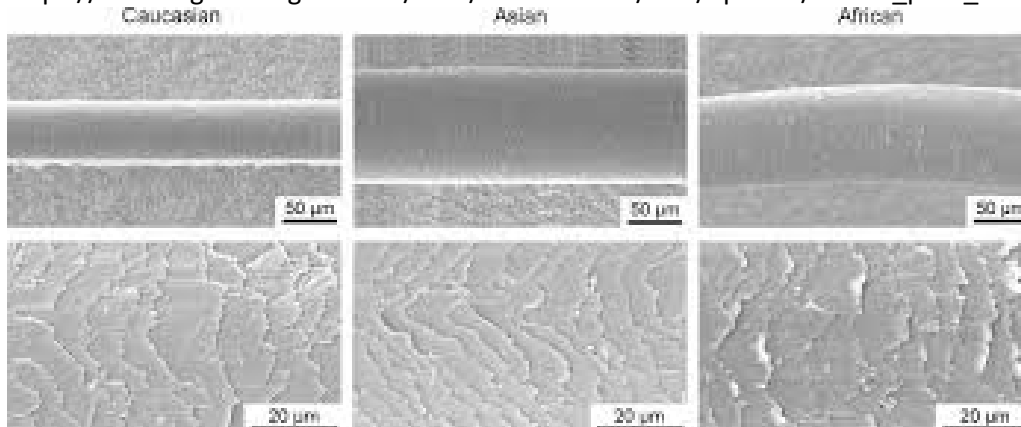
Black hair 600X



TM3000 2017/03/18 12:22 NL D6.0 x600 100 um

Comparison of three hair types (from Science Direct:

[https://nlbb.engineering.osu.edu/sites/nlbb.osu.edu/files/uploads/lowres\\_pims\\_hairrev\\_bb\\_08.pdf](https://nlbb.engineering.osu.edu/sites/nlbb.osu.edu/files/uploads/lowres_pims_hairrev_bb_08.pdf))



National Nanotechnology Coordinated Infrastructure

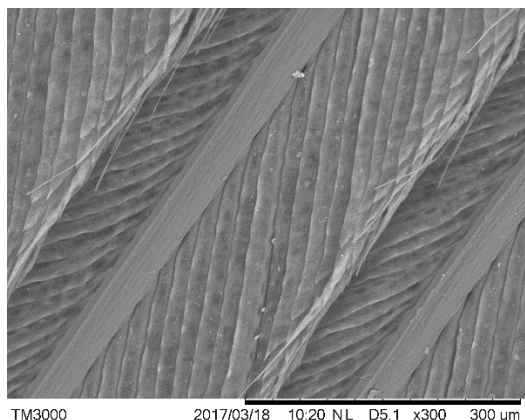
[www.nnci.net](http://www.nnci.net)

This work is licensed under a [Creative Commons Attribution-NonCommercial-ShareAlike 4.0 International License](https://creativecommons.org/licenses/by-nc-sa/4.0/). Development and distribution funded by the **National Science Foundation**



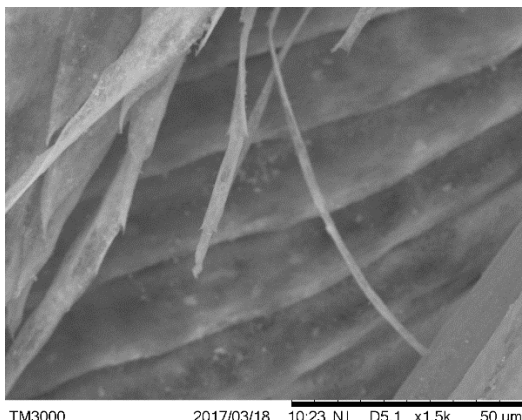


Feather 300X



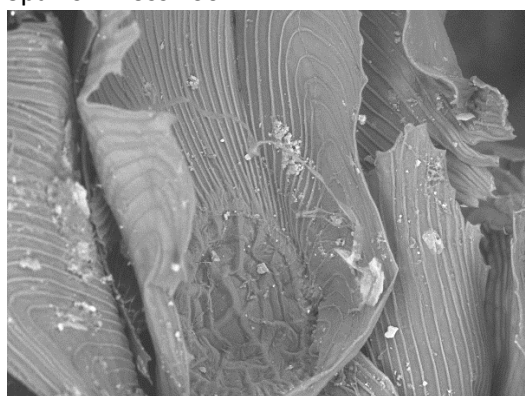
TM3000 2017/03/18 10:20 NL D5.1 x300 300 um

Feather 1500X



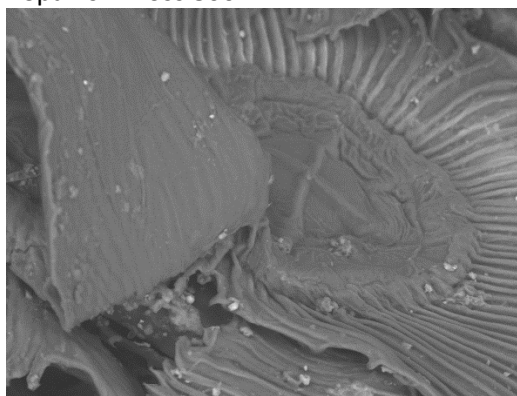
TM3000 2017/03/18 10:23 NL D5.1 x1.5k 50 um

Spanish Moss 400X



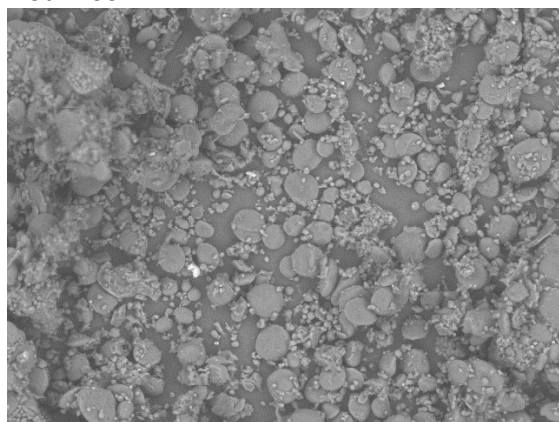
TM3000 2017/03/18 12:08 NL D5.9 x400 200 um

Spanish Moss 800X



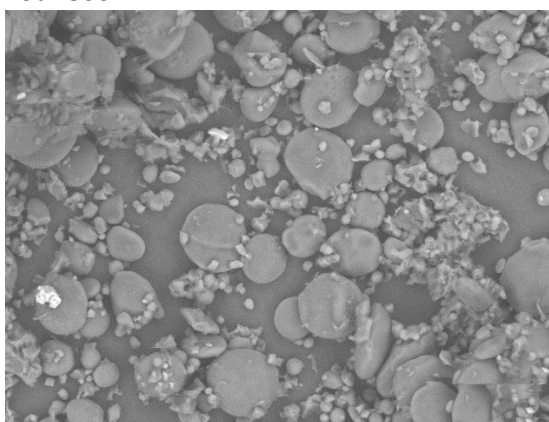
TM3000 2016/04/08 11:20 NL D5.9 x800 100 um

Flour 400X



TM3000 2020/08/11 09:53 NL D5.7 x400 200 um

Four 800X

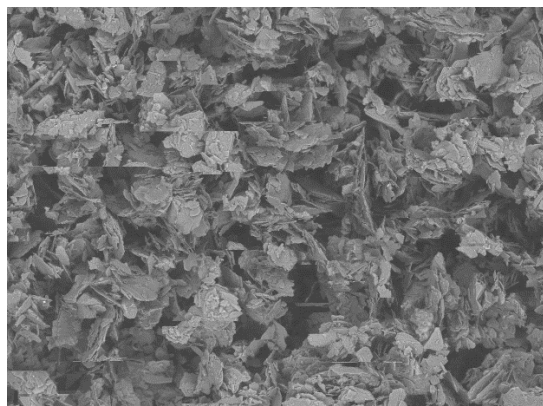


TM3000 2020/08/11 09:55 NL D5.7 x800 100 um



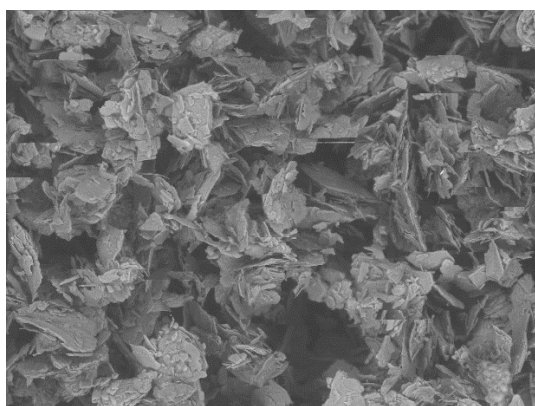


Talc 200X



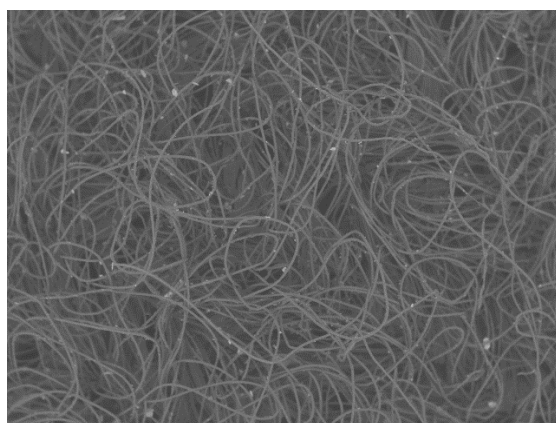
TM3000 2020/08/11 10:04 NL D5.6 x200 500 um

Talc 300X



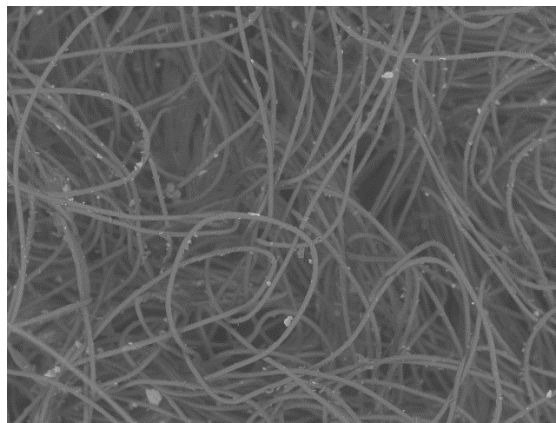
TM3000 2020/08/11 10:05 NL D5.6 x300 300 um

Felt 50X



TM3000 2020/08/11 10:38 NL D4.6 x50 2 mm

Felt 100X



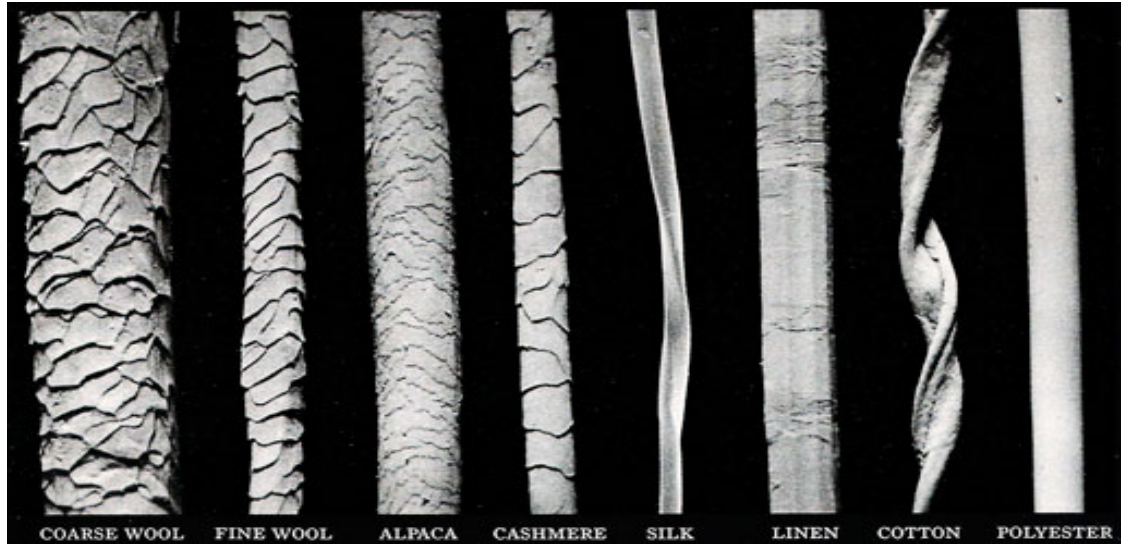
TM3000 2020/08/11 10:39 NL D4.7 x100 1 mm







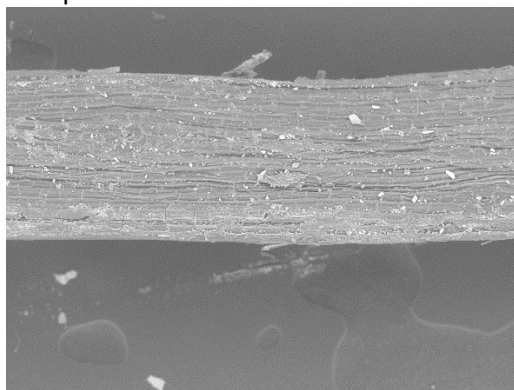
Comparison of various fibers: <http://www.rpd611.com/HSL/allFibersX.jpg>



Hemp fibers from ecohempfiber.com

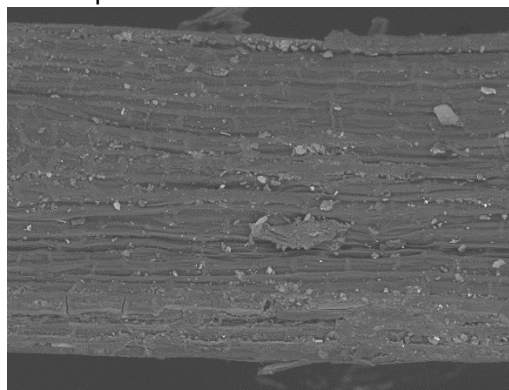


Hemp fiber 200X



TM3000 2020/08/11 11:17 NL D5.5 x200 500 um

Hemp fiber 400X



TM3000 2020/08/11 11:20 NL D5.5 x400 200 um



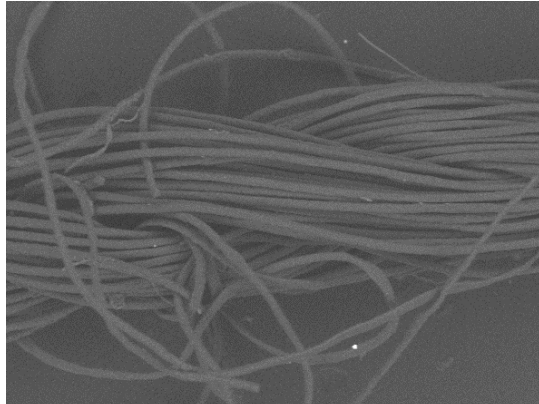
National Nanotechnology Coordinated Infrastructure

[www.nnci.net](http://www.nnci.net)

This work is licensed under a [Creative Commons Attribution-NonCommercial-ShareAlike 4.0 International License](https://creativecommons.org/licenses/by-nc-sa/4.0/). Development and distribution funded by the **National Science Foundation**

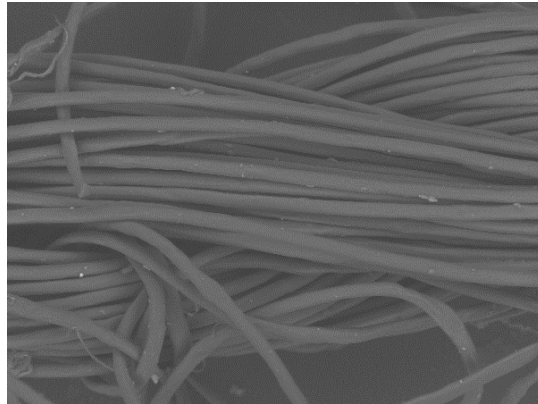


Thread from shirt 250X



TM3000\_rit0440 2015/03/21 12:08 NL D5.6 x250 300 um

Thread from shirt 400X



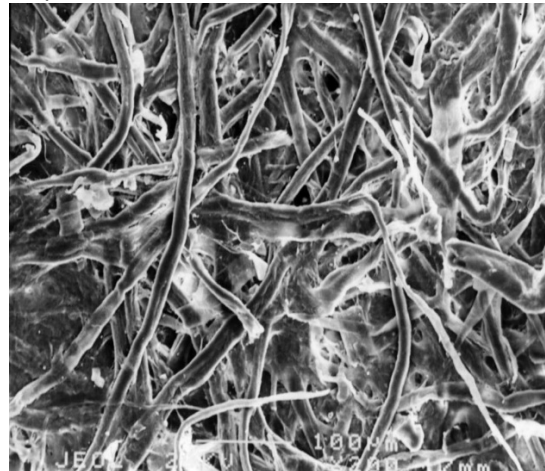
TM3000\_rit0438 2015/03/21 12:06 NL D5.7 x400 200 um

Post it Note 80X

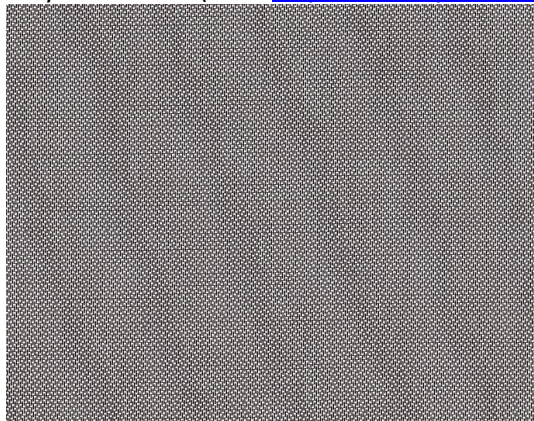


TM3000\_0106 2012/06/21 11:07 N D4.7 x80 1 mm

Paper 200X



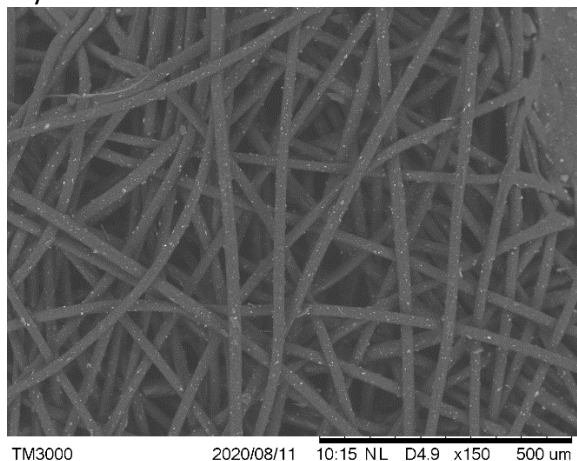
Polyester fabric (from <https://www.pxfuel.com/en/free-photo-juzlp>)



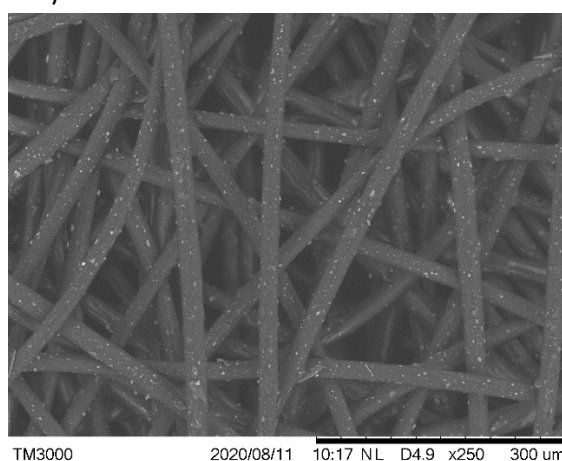




Polyester 150X

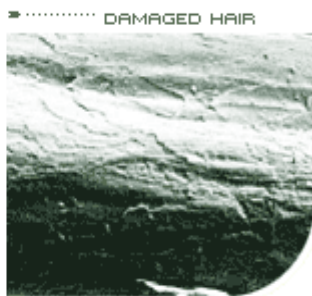


Polyester 250X

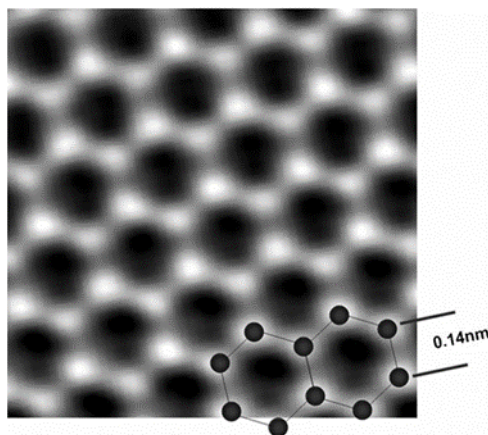


To see the “Structure of Damaged Hair” visit:

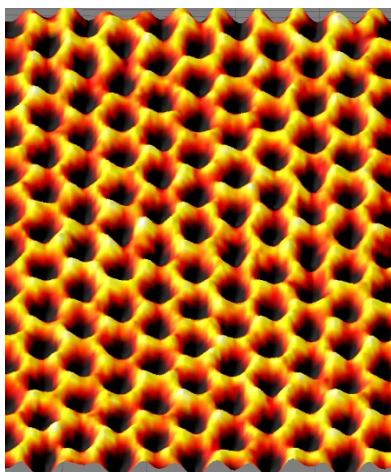
<https://loveinsydney.wordpress.com/2012/04/01/structure-of-damaged-hair/>



Graphene AFM image by author



Graphene AFM image: <https://bat-smg.m.wikipedia.org/wiki/Abruozdielis:Grap>



National Nanotechnology Coordinated Infrastructure

[www.nnci.net](http://www.nnci.net)

This work is licensed under a [Creative Commons Attribution-NonCommercial-ShareAlike 4.0 International License](https://creativecommons.org/licenses/by-nc-sa/4.0/). Development and distribution funded by the **National Science Foundation**