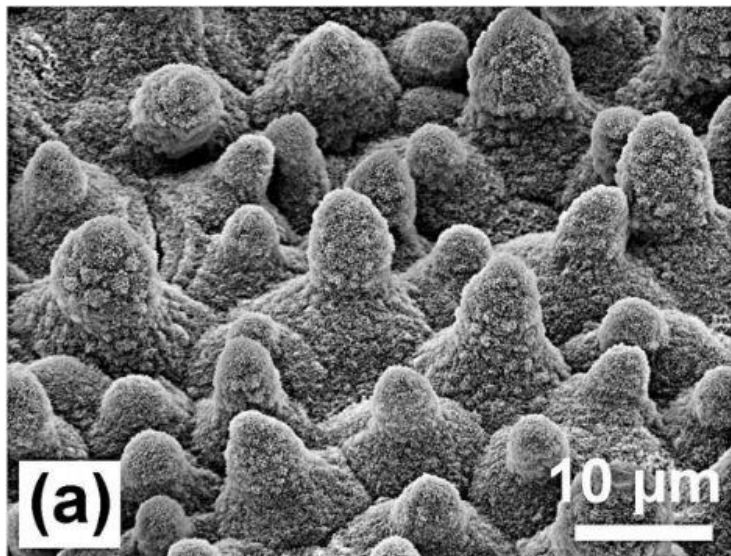


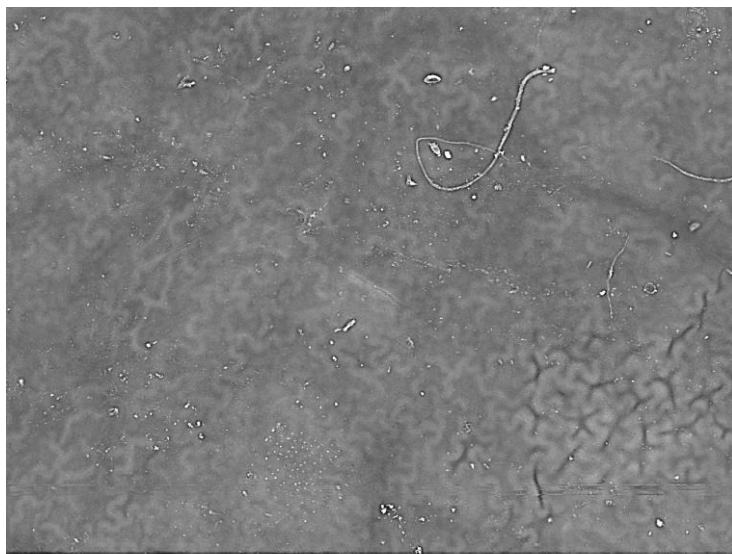
## Scanning Electron Images of Lotus and Magnolia leaves



SEM image of *Nelumbo nucifera*  
(Lotus)

Open Access under the terms of the Creative Commons Attribution License

Source: *Beilstein Journal of Nanotechnology* (<http://www.beilstein-journals.org/bjnano>)



SEM image of *Magnolia gradiflora* leaf

TM3000\_0352 2014/01/27 14:49 HL D4.8 x300 300 um

Image Institute of Electronics and Nanotechnology  
Georgia Institute of Technology