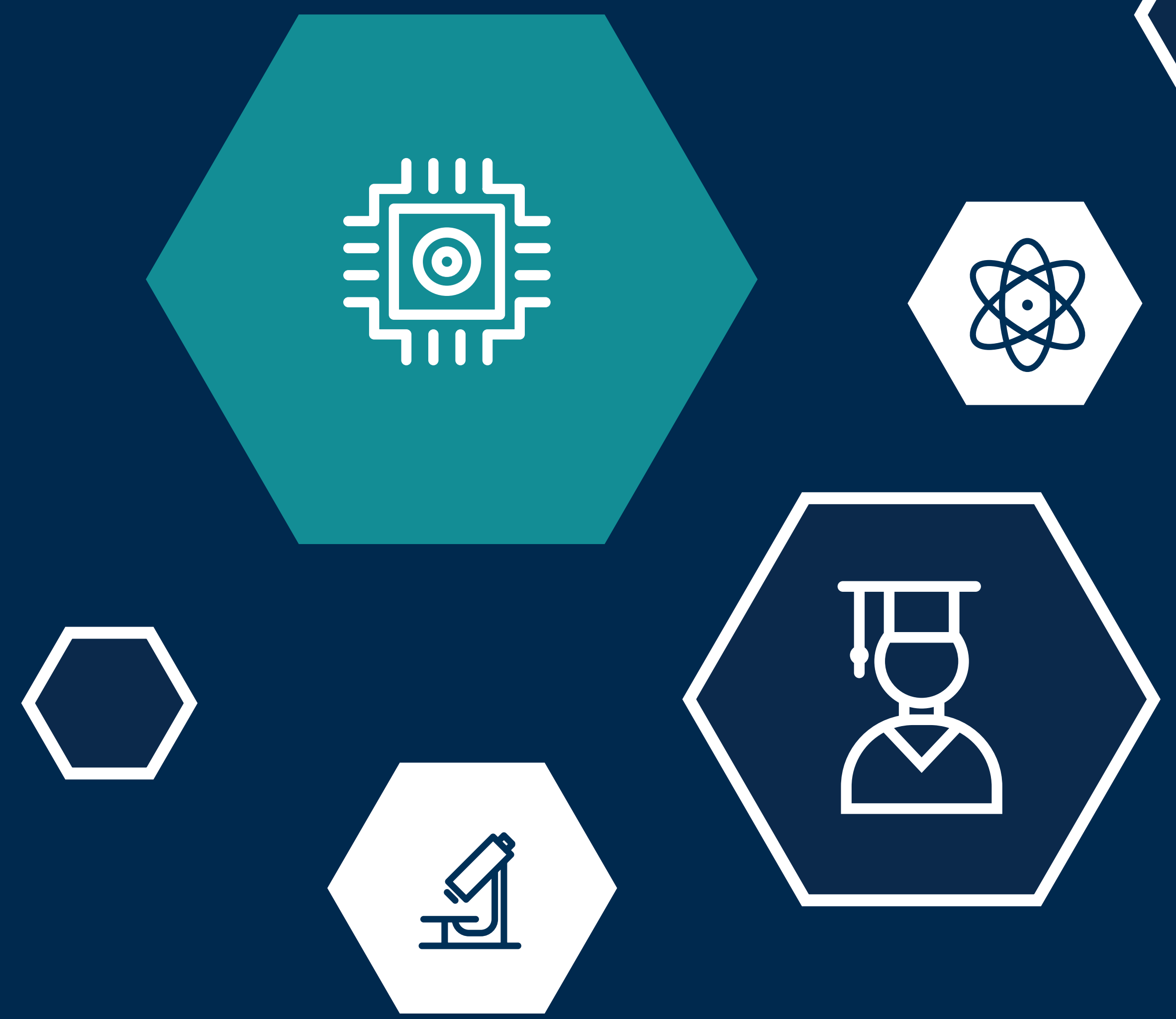


# NNCI Societal and Ethical Implications Webinar

May 9, 2024 | 3:00 - 4:00 p.m. ET



## Philanthropic Funding of Scientific Research

While a lot of funding of academic labs comes from Federal government agencies, philanthropies are playing an increasingly important role in supporting the scientific enterprise. The mission, goals, and administration of philanthropies are, however, quite different from organizations like the NSF and DOE. This webinar will bring together a panel of experts with extensive experience at philanthropies. We will host a 30-40 minute discussion about the landscape of philanthropic funding for scientific research, followed by ample time for questions from the audience.



### Panelists:

**Evan Michelson, Ph.D.** | Program Director overseeing the Energy and Environment Program at the Alfred P. Sloan Foundation

**Jane Flegal, Ph.D.** | Market Development and Policy Lead at Stripe Climate and Frontier; formerly led the US Climate Programs at the Hewlett Foundation and the Bernard and Anne Spitzer Charitable Trust

**Josh Greenberg, Ph.D.** | Program Director overseeing the Technology and New York City Programs at the Alfred P. Sloan Foundation

### Moderator:

**Jamey Wetmore**, Associate Professor at Arizona State University and Associate Director of the NNCI for Societal and Ethical Implications



Access the event: [b.gatech.edu/4cRdrvN](https://b.gatech.edu/4cRdrvN)

